

Plan 17	LGH D-2603
Plan 16	LGH D-2503
Plan 15	LGH D-2403
Plan 14	LGH D-2303
Plan 13	LGH D-2203
Plan 12	LGH D-2103
Plan 11	LGH D-2003
Plan 10	LGH D-1903
Plan 9	LGH D-1803
Plan 8	LGH D-1703
Plan 7	LGH D-1603
Plan 6	LGH D-1503
Plan 5	LGH D-1403
Plan 4	LGH D-1303
Plan 3	LGH D-1203
Plan 2	LGH D-1103

Entré

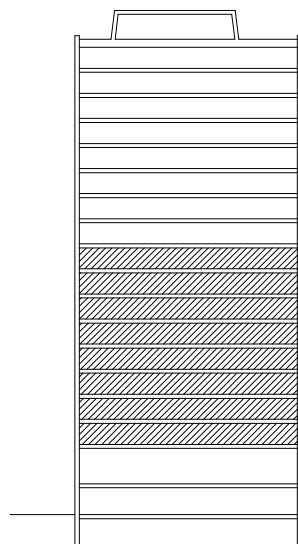
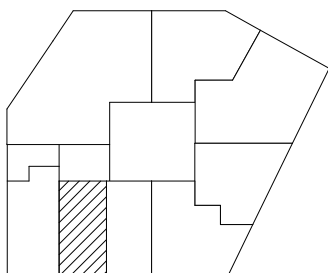
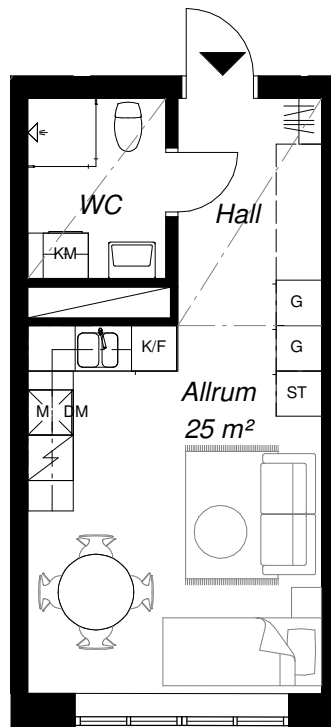
-  ENTRÉ
-  KAPPHYLLA
-  GARDEROB
-  STÅD
-  SKJUTDÖRRSGARDEROB
-  MIKRO
-  KYL
-  FRYSS
-  KYL/FRYS
-  DISKMASKIN
-  ELCENTRAL
-  INDUKTIONSHÄLL
-  TVÄTTMASKIN
-  TORKTUMLARE
-  KOMBIMASKIN

Rumshöjd 2-16 = 2690

Rumshöjd plan 17 = (Höjd, enl senare besked)

Undertak, rumshöjd = 2350





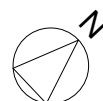
Plan 9 LGH D-1806
 Plan 8 LGH D-1706
 Plan 7 LGH D-1606
 Plan 6 LGH D-1506
 Plan 5 LGH D-1406
 Plan 4 LGH D-1306
 Plan 3 LGH D-1206
 Plan 2 LGH D-1106

Entré



SKALA: 1:100

2021-05-24 AVVIKELSER KAN FÖREKOMMA. YTANGIVELSER ÄR PRELIMINÄRA.

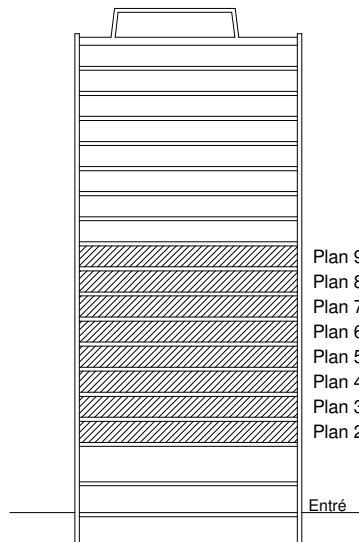
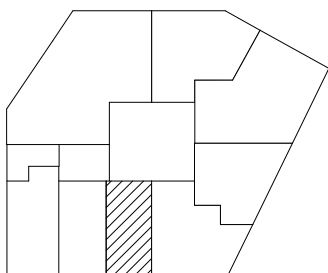
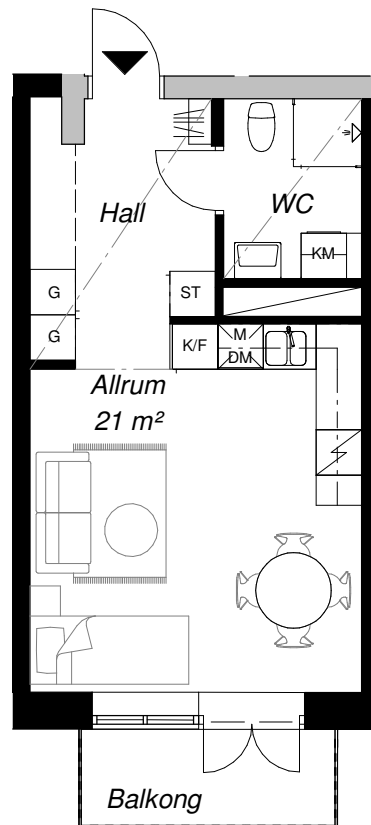


- ▶ ENTRÉ
- ≡// KAPPHYLLA
- G GARDEROB
- ST STÅD
- SKJ SKJUTDÖRRSGARDEROB
- M MIKRO
- K KYL
- F FRY
- K/F KYL/FRYS
- DM DISKMASKIN
- ELC ELCENTRAL
- ☒ INDUKTIONSHÄLL
- TM TVÄTTMASKIN
- TT TORKTUMLARE
- KM KOMBIMASKIN

Rumshöjd 2-16 = 2690

Rumshöjd plan 17 = (Höjd, enl senare besked)

Undertak, rumshöjd = 2350



- Plan 9 LGH D-1805
- Plan 8 LGH D-1705
- Plan 7 LGH D-1605
- Plan 6 LGH D-1505
- Plan 5 LGH D-1405
- Plan 4 LGH D-1305
- Plan 3 LGH D-1205
- Plan 2 LGH D-1105

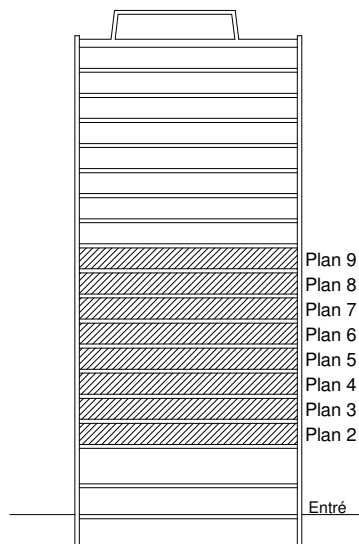
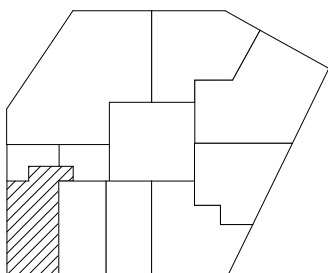
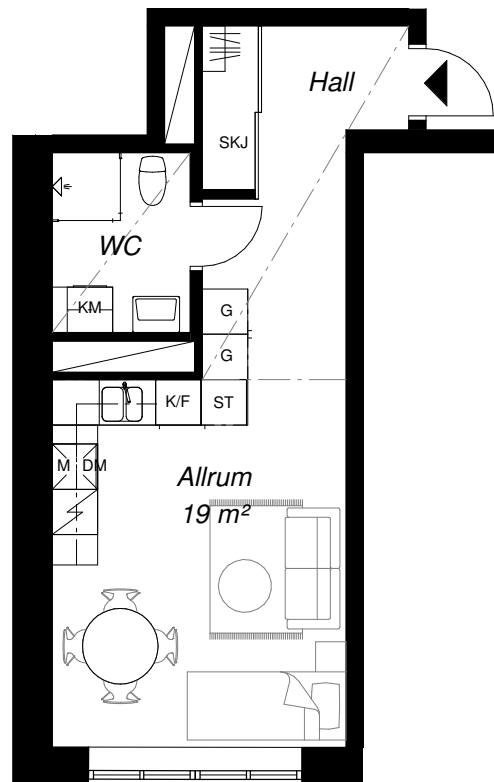
- ENTRÉ
- KAPPHYLLA
- GARDEROB
- STÅD
- SKJUTDÖRRSGARDEROB
- MIKRO
- KYL
- FRYSS
- KYL/FRYSS
- DISKMASKIN
- ELCENTRAL
- INDUKTIONSHÄLL
- TVÄTTMASKIN
- TORKTUMLARE
- KOMBIMASKIN

Rumshöjd 2-16 = 2690

Rumshöjd plan 17 = (Höjd, enl senare besked)

Undertak, rumshöjd = 2350





- Plan 9 LGH D-1807
- Plan 8 LGH D-1707
- Plan 7 LGH D-1607
- Plan 6 LGH D-1507
- Plan 5 LGH D-1407
- Plan 4 LGH D-1307
- Plan 3 LGH D-1207
- Plan 2 LGH D-1107

Entré

- ▶ ENTRÉ
- ≡// KAPPHYLLA
- G GARDEROB
- ST STÅD
- SKJ SKJUTDÖRRSGARDEROB
- M MIKRO
- K KYL
- F FRYS
- K/F KYL/FRYS
- DM DISKMASKIN
- ELC ELCENTRAL
- ☒ INDUKTIONSHÄLL
- TM TVÄTTMASKIN
- TT TORKTUMLARE
- KM KOMBIMASKIN

Rumshöjd 2-16 = 2690

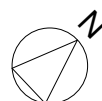
Rumshöjd plan 17 = (Höjd, enl senare besked)

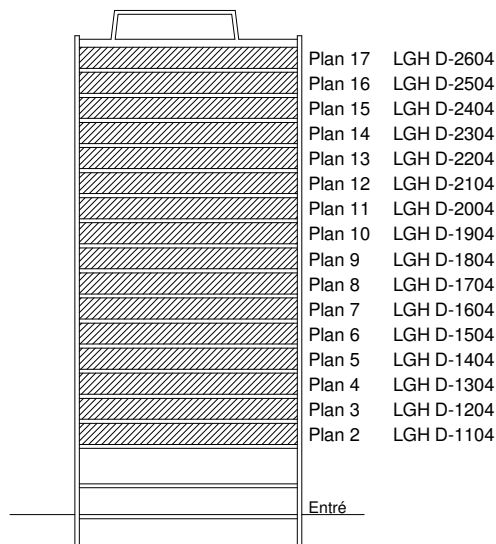
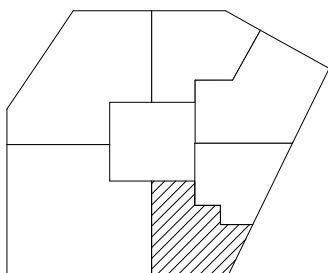
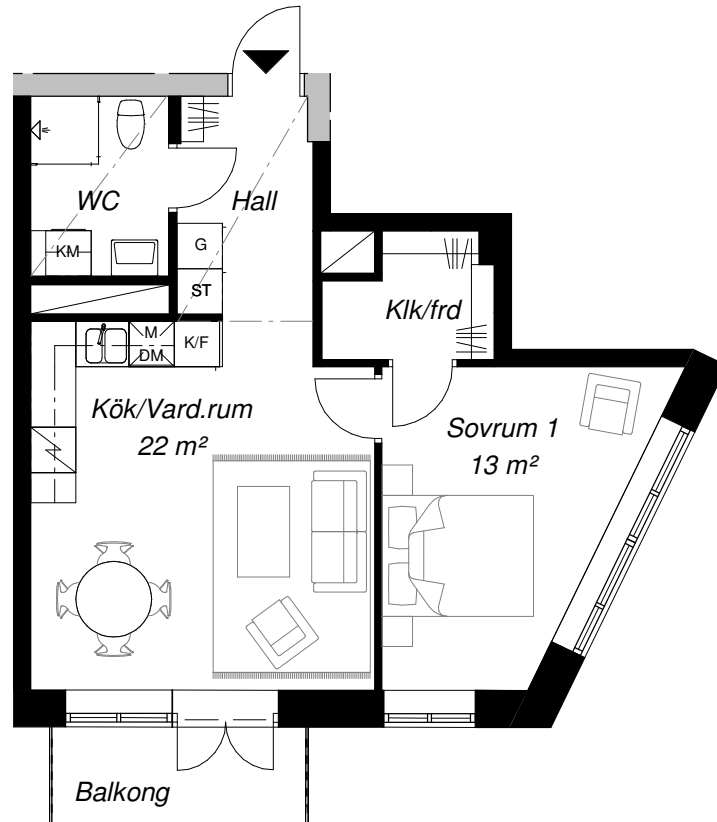
Undertak, rumshöjd = 2350



SKALA: 1:100

2021-05-24 AVVIKELSER KAN FÖREKOMMA. YTANGIVELSER ÄR PRELIMINÄRA.



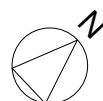


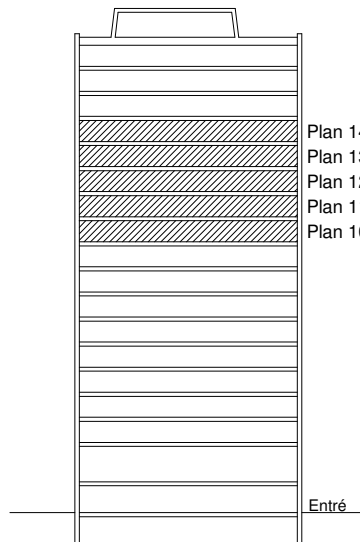
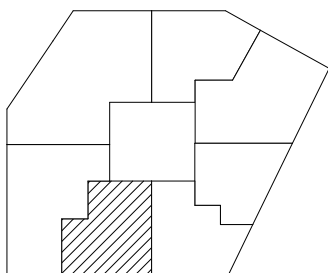
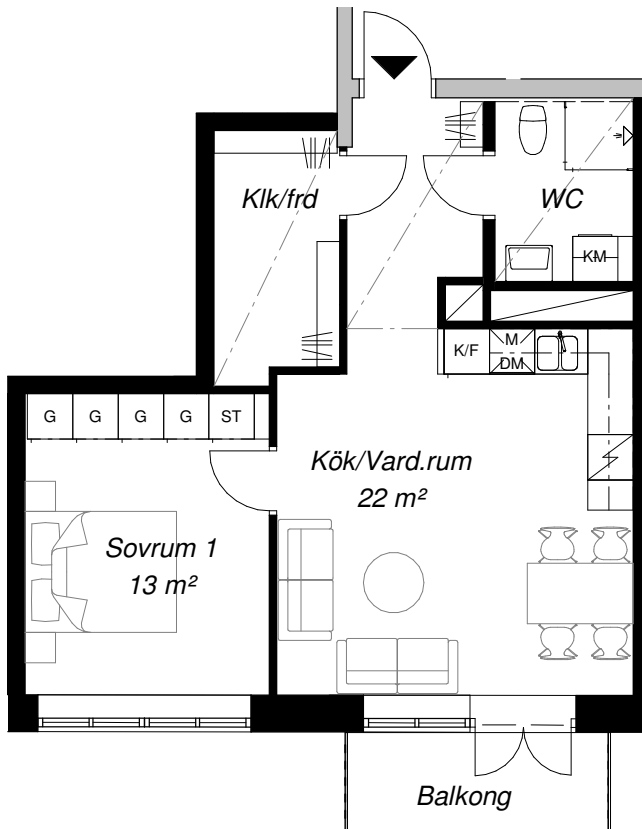
- ENTRÉ
- KAPPHYLLA
- G GARDEROB
- ST STÅD
- SKJ SKJUTDÖRRSGARDEROB
- M MIKRO
- K KYL
- F FRYS
- K/F KYL/FRYS
- DM DISKMASKIN
- ELC ELCENTRAL
- INDUKTIONSHÄLL
- TM TVÄTTMASKIN
- TT TORKTUMLARE
- KM KOMBIMASKIN

Rumshöjd 2-16 = 2690

Rumshöjd plan 17 = (Höjd, enl senare besked)

Undertak, rumshöjd = 2350





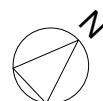
Plan 14 LGH D-2305
 Plan 13 LGH D-2205
 Plan 12 LGH D-2105
 Plan 11 LGH D-2005
 Plan 10 LGH D-1905

Entré



SKALA: 1:100

2021-05-24 AVVIKELSER KAN FÖREKOMMA. YTANGIVELSER ÄR PRELIMINÄRA.

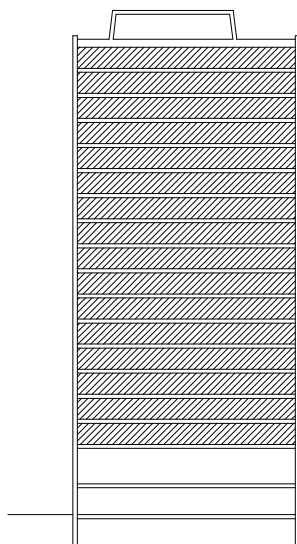
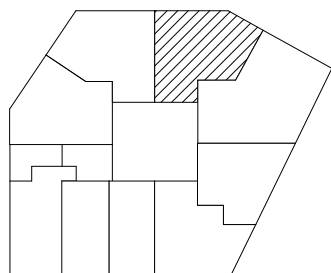
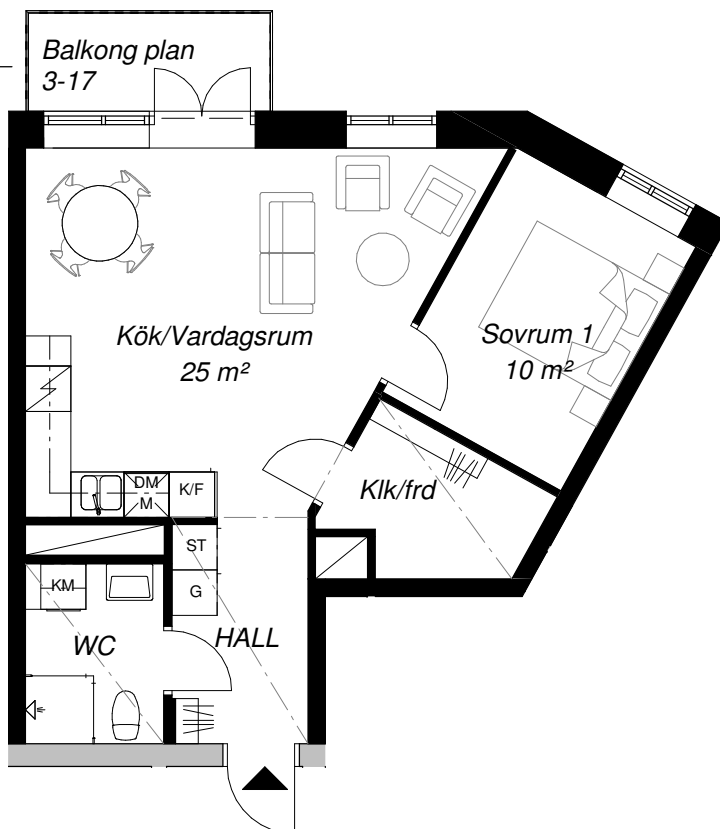


- ▶ ENTRÉ
- ≡// KAPPHYLLA
- G GARDEROB
- ST STÅD
- SKJ SKJUTDÖRRSGARDEROB
- M MIKRO
- K KYL
- F FRY
- K/F KYL/FRYS
- DM DISKMASKIN
- ELC ELCENTRAL
- ☒ INDUKTIONSHÄLL
- TM TVÄTTMASKIN
- TT TORKTUMLARE
- KM KOMBIMASKIN

Rumshöjd 2-16 = 2690

Rumshöjd plan 17 = (Höjd, enl senare besked)

Undertak, rumshöjd = 2350



- Plan 17 LGH D-2601
- Plan 16 LGH D-2501
- Plan 15 LGH D-2401
- Plan 14 LGH D-2301
- Plan 13 LGH D-2201
- Plan 12 LGH D-2101
- Plan 11 LGH D-2001
- Plan 10 LGH D-1901
- Plan 9 LGH D-1801
- Plan 8 LGH D-1701
- Plan 7 LGH D-1601
- Plan 6 LGH D-1501
- Plan 5 LGH D-1401
- Plan 4 LGH D-1301
- Plan 3 LGH D-1201
- Plan 2 LGH D-1101

Entré

- ▶ ENTRÉ
- ≡≡≡ KAPPHYLLA
- G GARDEROB
- ST STÅD
- SKJ SKJUTDÖRRSGARDEROB
- M MIKRO
- K KYL
- F FRYG
- K/F KYL/FRYG
- DM DISKMASKIN
- ELC ELCENTRAL
- ☒ INDUKTIONSHÄLL
- TM TVÄTTMASKIN
- TT TORKTUMLARE
- KM KOMBIMASKIN

Rumshöjd 2-16 = 2690

Rumshöjd plan 17 = (Höjd, enl senare besked)

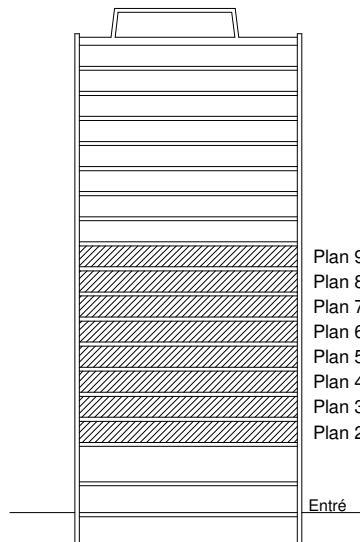
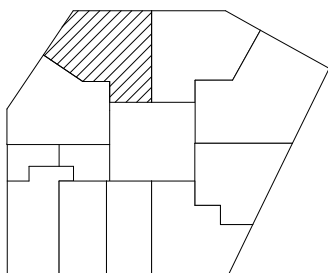
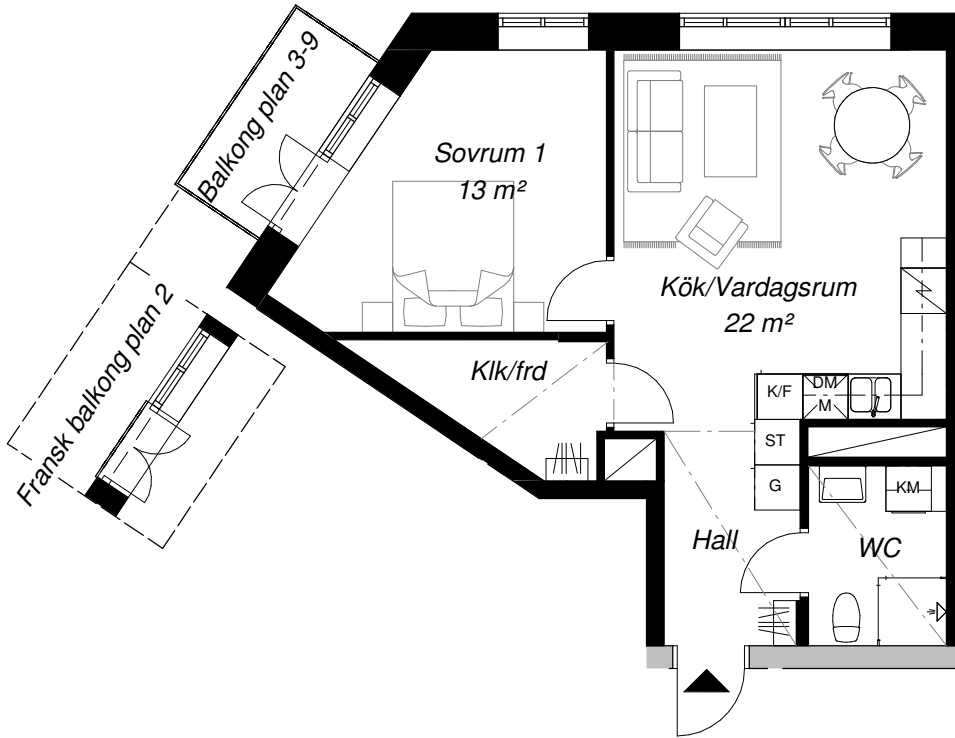
Undertak, rumshöjd = 2350



SKALA: 1:100

2021-05-24 AVVIKELSER KAN FÖREKOMMA. YTANGIVELSER ÄR PRELIMINÄRA.





Plan 9 LGH D-1809
 Plan 8 LGH D-1709
 Plan 7 LGH D-1609
 Plan 6 LGH D-1509
 Plan 5 LGH D-1409
 Plan 4 LGH D-1309
 Plan 3 LGH D-1209
 Plan 2 LGH D-1109

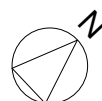
Entré

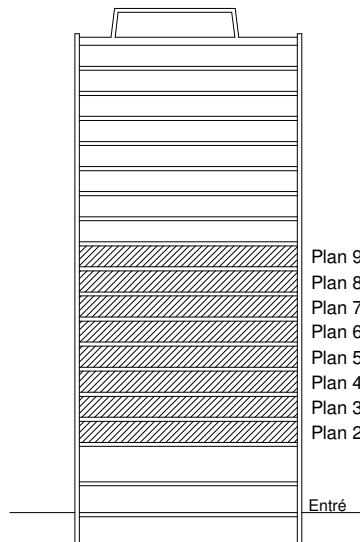
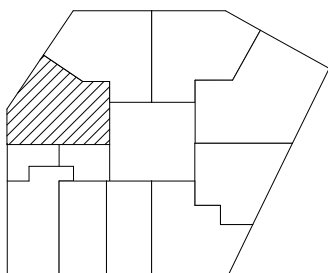
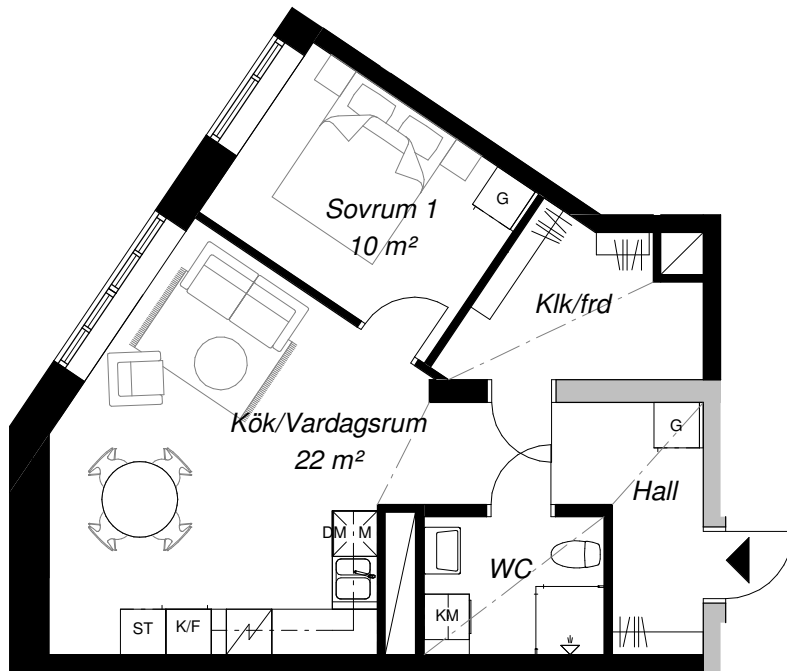
- ▶ ENTRÉ
- ≡// KAPPHYLLA
- G GARDEROB
- ST STÅD
- SKJ SKJUTDÖRRSGARDEROB
- M MIKRO
- K KYL
- F FRYS
- K/F KYL/FRYS
- DM DISKMASKIN
- ELC ELCENTRAL
- ☒ INDUKTIONSHÄLL
- TM TVÄTTMASKIN
- TT TORKTUMLARE
- KM KOMBIMASKIN

Rumshöjd 2-16 = 2690

Rumshöjd plan 17 = (Höjd, enl senare besked)

Undertak, rumshöjd = 2350





- Plan 9 LGH D-1808
- Plan 8 LGH D-1708
- Plan 7 LGH D-1608
- Plan 6 LGH D-1508
- Plan 5 LGH D-1408
- Plan 4 LGH D-1308
- Plan 3 LGH D-1208
- Plan 2 LGH D-1108

Entré



SKALA: 1:100

2021-05-24 AVVIKELSER KAN FÖREKOMMA. YTANGIVELSER ÄR PRELIMINÄRA.

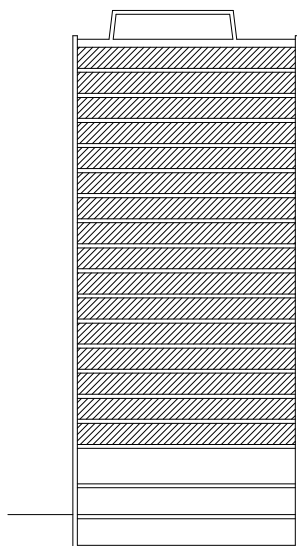
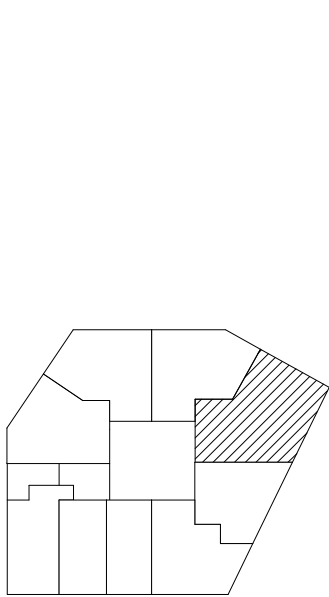
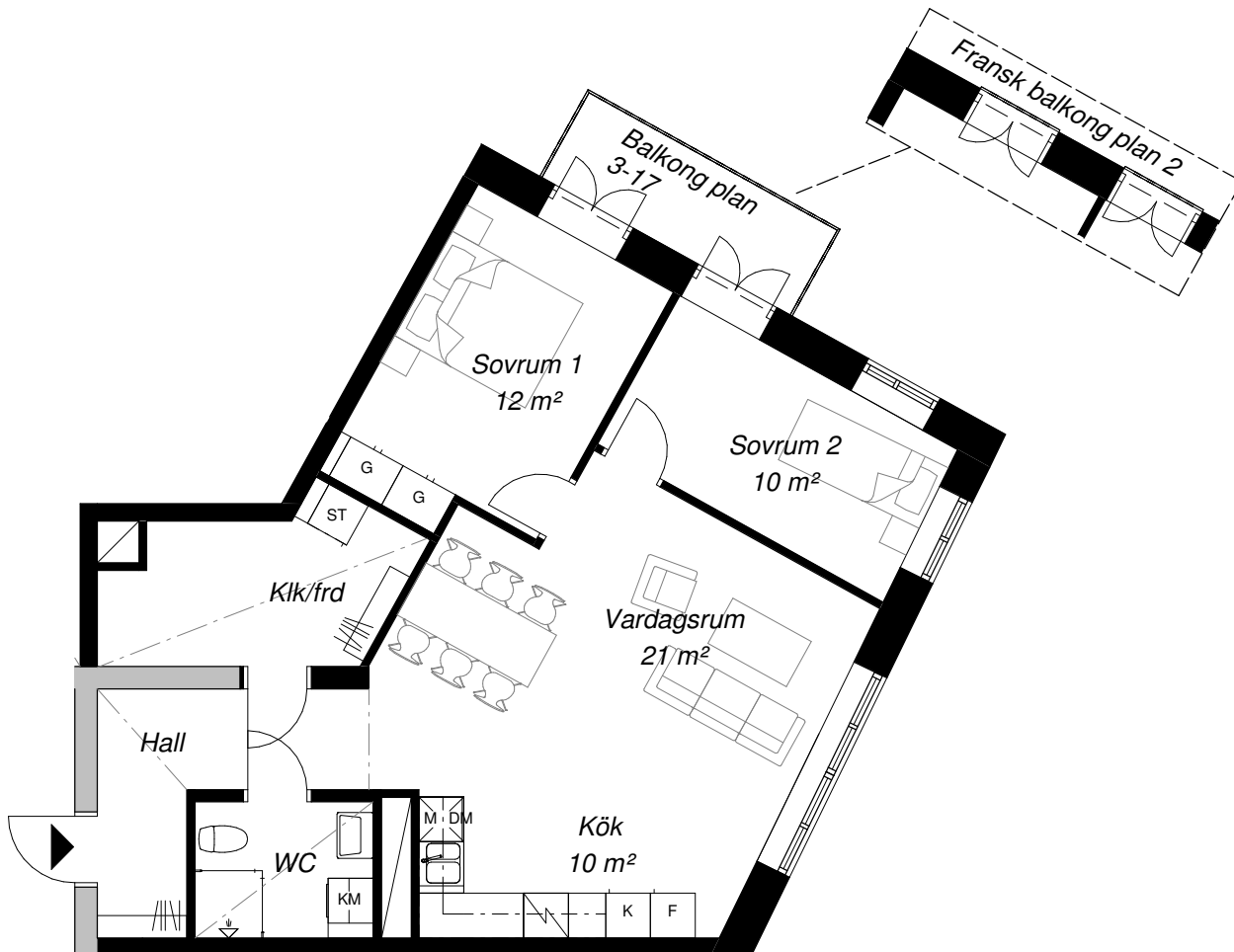


- ▶ ENTRÉ
- ≡// KAPPHYLLA
- G GARDEROB
- ST STÅD
- SKJ SKJUTDÖRRSGARDEROB
- M MIKRO
- K KYL
- F FRY
- K/F KYL/FRYS
- DM DISKMASKIN
- ELC ELCENTRAL
- ☒ INDUKTIONSHÄLL
- TM TVÄTTMASKIN
- TT TORKTUMLARE
- KM KOMBIMASKIN

Rumshöjd 2-16 = 2690

Rumshöjd plan 17 = (Höjd, enl senare besked)

Undertak, rumshöjd = 2350



- Plan 17 LGH D-2602
- Plan 16 LGH D-2502
- Plan 15 LGH D-2402
- Plan 14 LGH D-2302
- Plan 13 LGH D-2202
- Plan 12 LGH D-2102
- Plan 11 LGH D-2002
- Plan 10 LGH D-1902
- Plan 9 LGH D-1802
- Plan 8 LGH D-1702
- Plan 7 LGH D-1602
- Plan 6 LGH D-1502
- Plan 5 LGH D-1402
- Plan 4 LGH D-1302
- Plan 3 LGH D-1202
- Plan 2 LGH D-1102

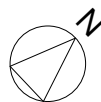
Entré

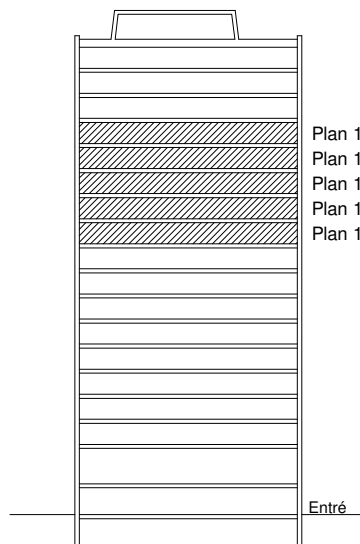
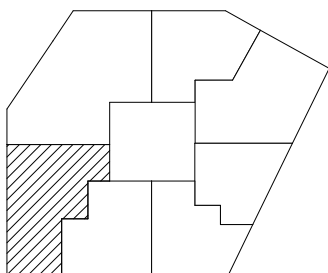
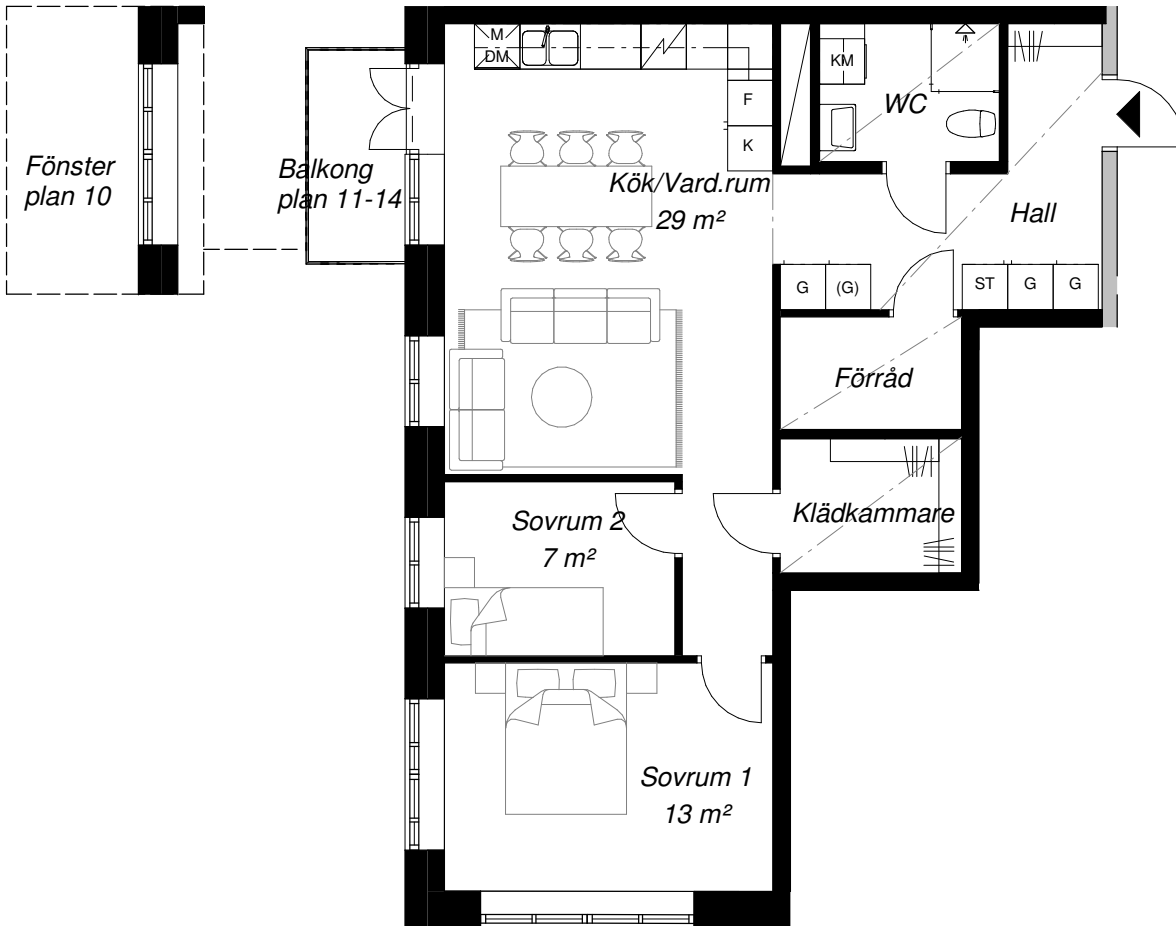
- ENTRÉ
- KAPPHYLLA
- GARDEROB
- STÅD
- SKJUTDÖRRSGARDEROB
- MIKRO
- KYL
- FRYS
- KYL/FRYS
- DISKMASKIN
- ELCENTRAL
- INDUKTIONSHÄLL
- TVÄTTMASKIN
- TORKTUMLARE
- KOMBIMASKIN

Rumshöjd 2-16 = 2690

Rumshöjd plan 17 = (Höjd, enl senare besked)

Undertak, rumshöjd = 2350





Plan 14 LGH D-2306
 Plan 13 LGH D-2206
 Plan 12 LGH D-2106
 Plan 11 LGH D-2006
 Plan 10 LGH D-1906

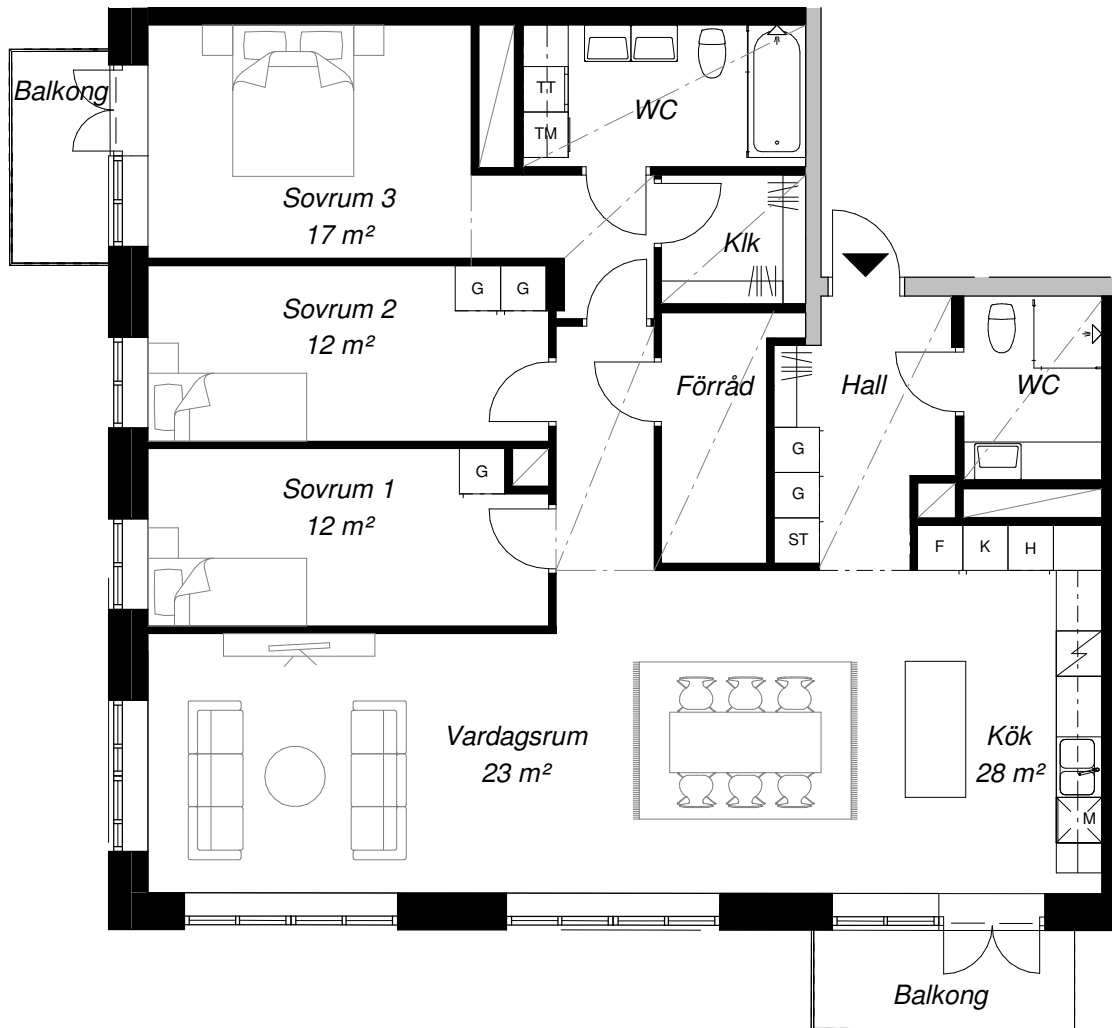
- ENTRÉ
- KAPPHYLLA
- GARDEROB
- STÅD
- SKJUTDÖRRSGARDEROB
- MIKRO
- KYL
- FRYSS
- KYL/FRYSS
- DISKMASKIN
- ELCENTRAL
- INDUKTIONSHÄLL
- TVÄTTMASKIN
- TORKTUMLARE
- KOMBIMASKIN

Rumshöjd 2-16 = 2690

Rumshöjd plan 17 = (Höjd, enl senare besked)

Undertak, rumshöjd = 2350



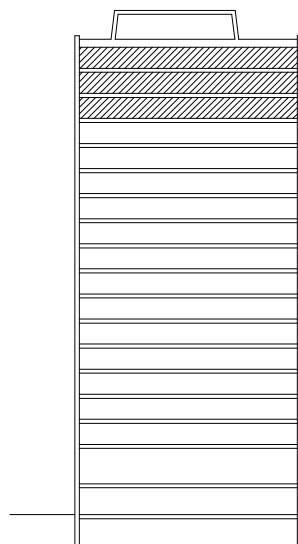
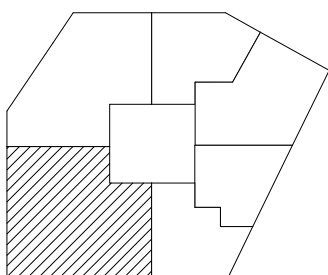


- ▶ ENTRÉ
- ≡// KAPPHYLLA
- G GARDEROB
- ST STÅD
- SKJ SKJUTDÖRRSGARDEROB
- M MIKRO
- K KYL
- F FRYS
- K/F KYL/FRYS
- DM DISKMASKIN
- ELC ELCENTRAL
- ☑ INDUKTIONSHÄLL
- TM TVÄTTMASKIN
- TT TORKTUMLARE
- KM KOMBIMASKIN

Rumshöjd 2-16 = 2690

Rumshöjd plan 17 = (Höjd, enl senare besked)

Undertak, rumshöjd = 2350



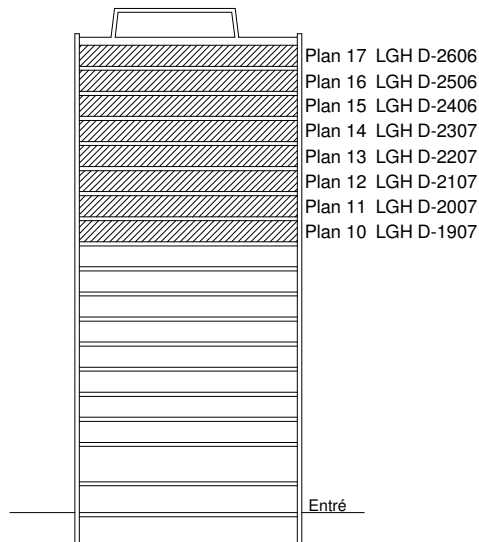
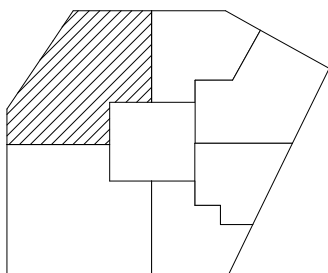
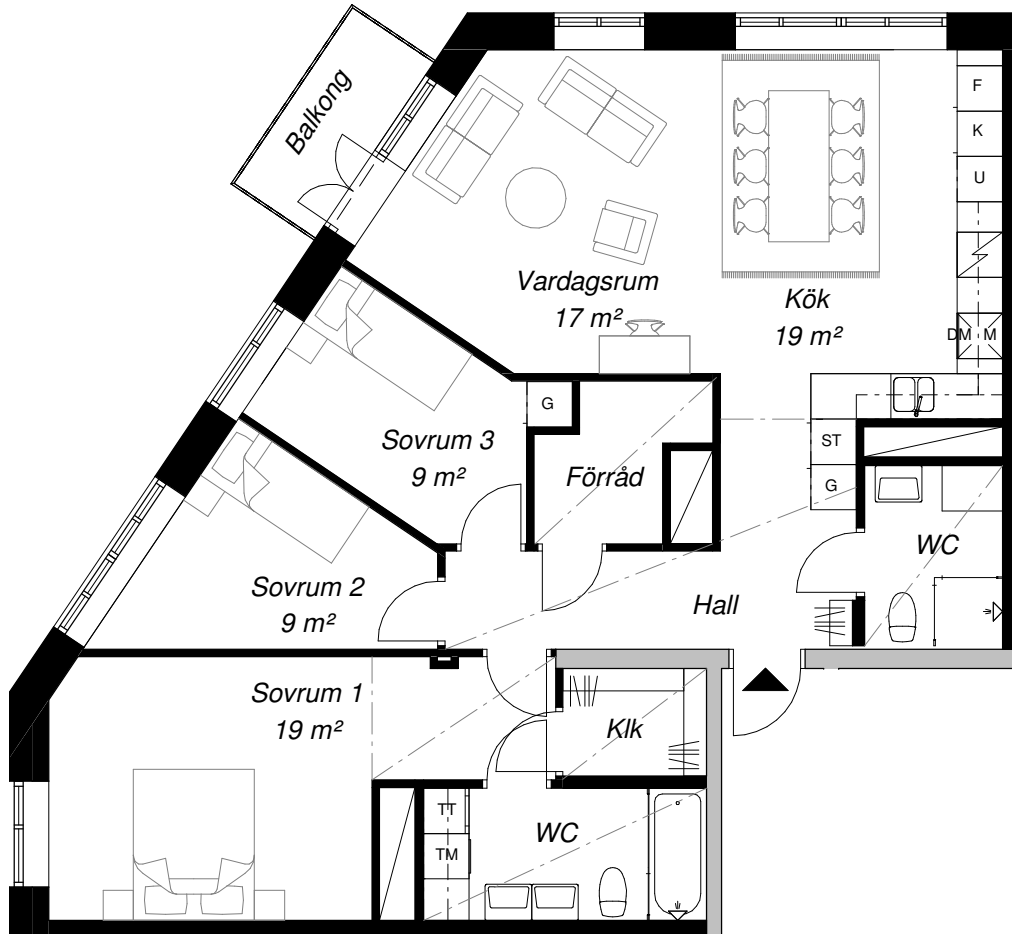
Plan 17 LGH D-2605

Plan 16 LGH D-2505

Plan 15 LGH D-2405

Entré





Plan 17 LGH D-2606
 Plan 16 LGH D-2506
 Plan 15 LGH D-2406
 Plan 14 LGH D-2307
 Plan 13 LGH D-2207
 Plan 12 LGH D-2107
 Plan 11 LGH D-2007
 Plan 10 LGH D-1907

Entré

- ▶ ENTRÉ
- ≡≡≡ KAPPHYLLA
- G GARDEROB
- ST STÅD
- SKJ SKJUTDÖRRSGARDEROB
- M MIKRO
- K KYL
- F FRY
- K/F KYL/FRYS
- DM DISKMASKIN
- ELC ELCENTRAL
- ☑ INDUKTIONSHÄLL
- TM TVÄTTMASKIN
- TT TORKTUMLARE
- KM KOMBIMASKIN

Rumshöjd 2-16 = 2690

Rumshöjd plan 17 = (Höjd, enl senare besked)

Undertak, rumshöjd = 2350

